

NEW PRICE | FOR SALE

FULLY IMPROVED 1,759 SF CORNER PREMISES

IN THE HEART OF METRO TOWN
STEPS FROM RAPID TRANSIT

300-301 4388 Beresford St, Burnaby BC



SITINGS REALTY LTD.

SITINGS.CA / 604.684.6767

1595 - 650 West Georgia Street, Vancouver, BC V6B 4N8

DAVID KNIGHT

Partner
Personal Real Estate Corporation

604.416.5581

david@sitings.ca

LIAM MARCH

Senior Associate
Personal Real Estate Corporation

604.628.2583

liam@sitings.ca

OPPORTUNITY OVERVIEW

Opportunity to acquire a fully improved strata office premises (comprised of two strata lots) located at the southwest corner of Beresford Street and McKay Avenue—just steps from Metrotown SkyTrain Station and Metropolis at Metrotown. This central location offers exceptional accessibility to neighboring municipalities and the Lower Mainland. The immediate area offers excellent amenities including vibrant shops, restaurants, and services.

The premises are currently improved with a reception area, seven high-end (7) private treatment rooms, two (2) washrooms as well as additional staff and storage areas. The unit also features a dedicated private north facing patio space and extensive glazing on three sides of the premises. This opportunity is ideal for medical, wellness, and professional office users.



Significant population growth forecasted in immediate area with approximately 15,012 new residential units currently in the planning stages and/or under development.



Dedicated Commercial Elevator provides direct access to Beresford Street (via a lobby) and the commercial parking area.



Walk Score:
96



Drive Times:

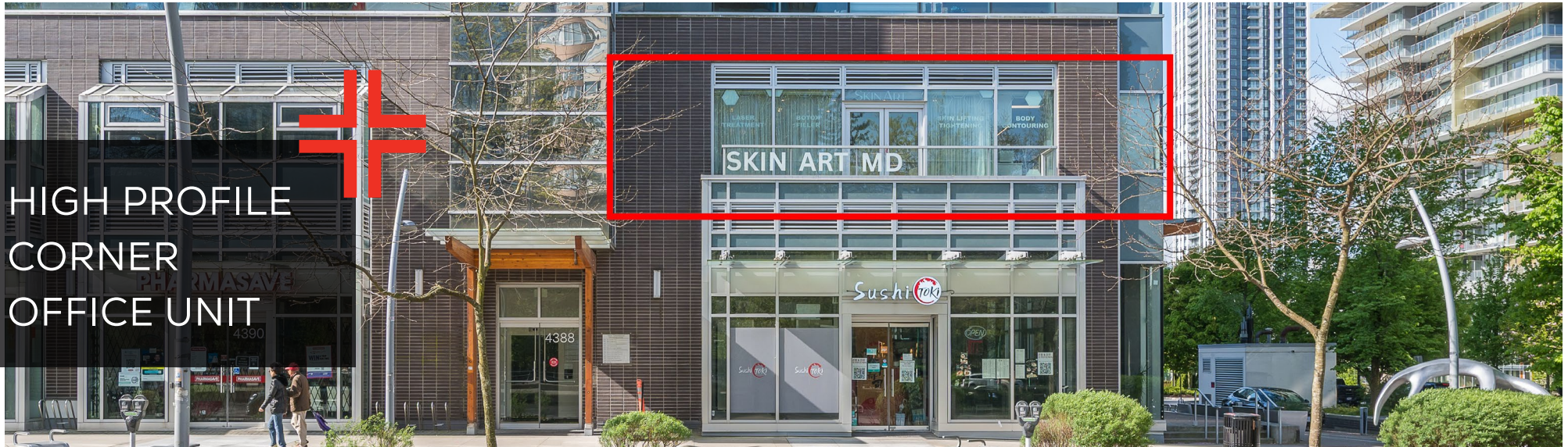
- + 3 minute drive (500 metres) to 99A (Kingsway)
- + 9 minute drive (4.2 km) to Marine Drive
- + 13 minute drive (3.4 km) to Highway 1



[VIRTUAL TOUR](#)



Transit Score:
88



HIGH PROFILE
CORNER
OFFICE UNIT

DETAILS

✦ Size:

- ✦ Unit 300: 997 SF
- ✦ Unit 301: 762 SF
- ✦ Total: 1,759 SF

✦ Property Taxes (2024):

- ✦ Unit 300: \$10,527.21
- ✦ Unit 301: \$8,237.25
- ✦ Total: \$18,764.46

✦ Price: \$2,090,000

✦ Parking: 3 Designated Parking Stalls

✦ Strata Fee:

- ✦ Unit 300: \$524.22 per month
- ✦ Unit 301: \$686.67 per month
- ✦ Total: \$1,210.89 per month

✦ Legal Description: Strata Lot 6 & 7 District Lots 153 Group 1 New Westminster District, Strata Plan EPS2421, together with an interest in the Common Property in proportion to the unit entitlement of the Strata Lot as shown on Form V

✦ PID: 029-559-723 & 029-559-731

✦ Zoning: C-2

AREA TENANTS



DEMOGRAPHICS

	3 MIN	5 MIN	10MIN
2024 Population	38,175	88,246	324,068
2029 Populations Projections	45,826	98,269	352,512
2024 Average HH Income	\$90,363	\$103,198	114,677
2024 Daytime Population	42,432	84,920	311,026

CONTACT

DAVID KNIGHT

Partner
Personal Real Estate Corporation

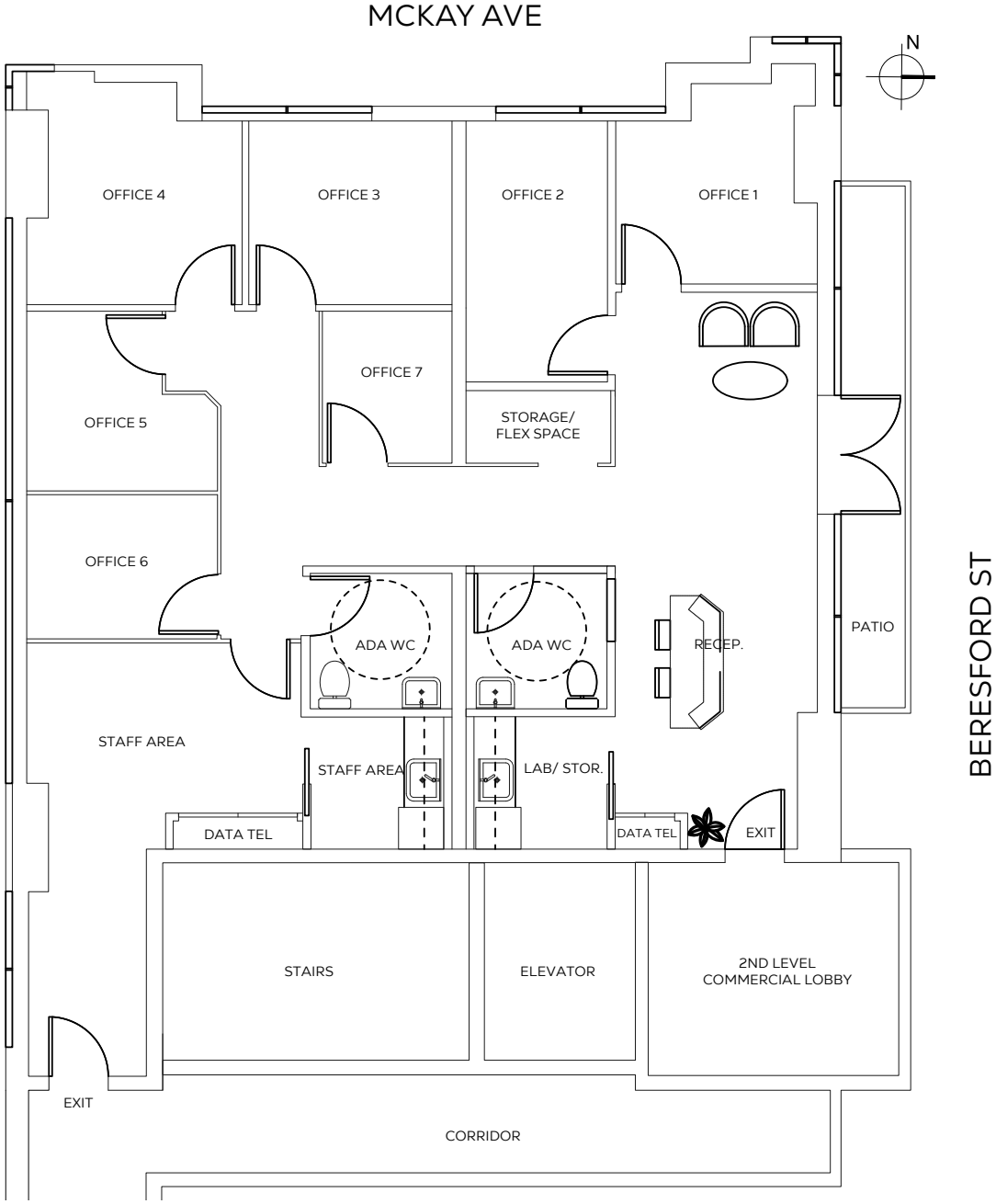
604.416.5581
david@sitings.ca

LIAM MARCH

Senior Associate
Personal Real Estate Corporation

604.628.2583
liam@sitings.ca

UNIT PLAN



This document/email has been prepared by Sitings Realty Ltd. for advertising and general information only. Although information contained herein is from sources we believe reliable, Sitings Realty Ltd. makes no guarantees, representations or warranties of any kind, expressed or implied, regarding the information including, but not limited to, warranties of content, accuracy and reliability. This document/email is subject to errors and omissions and any interested party should undertake their own inquiries as to the accuracy of the information. Sitings Realty Ltd. excludes unequivocally all inferred or implied terms, conditions and warranties arising out of this document and excludes all liability for loss and damages arising there from. All areas, measurements and dimension herein are approximate, interested parties/tenant are to verify measurements if important to them. This document/email is not an inducement representation.

AERIAL



This document/email has been prepared by Sitings Realty Ltd. for advertising and general information only. Although information contained herein is from sources we believe reliable, Sitings Realty Ltd. makes no guarantees, representations or warranties of any kind, expressed or implied, regarding the information including, but not limited to, warranties of content, accuracy and reliability. This document/email is subject to errors and omissions and any interested party should undertake their own inquiries as to the accuracy of the information. Sitings Realty Ltd. excludes unequivocally all inferred or implied terms, conditions and warranties arising out of this document and excludes all liability for loss and damages arising there from. All areas, measurements and dimension herein are approximate, interested parties/tenant are to verify measurements if important to them. This document/email is not an inducement representation.

EXTERIOR PHOTOS



INTERIOR PHOTOS



INTERIOR PHOTOS

