



102-93 6TH STREET

New Westminster, BC

LEASING BROCHURE

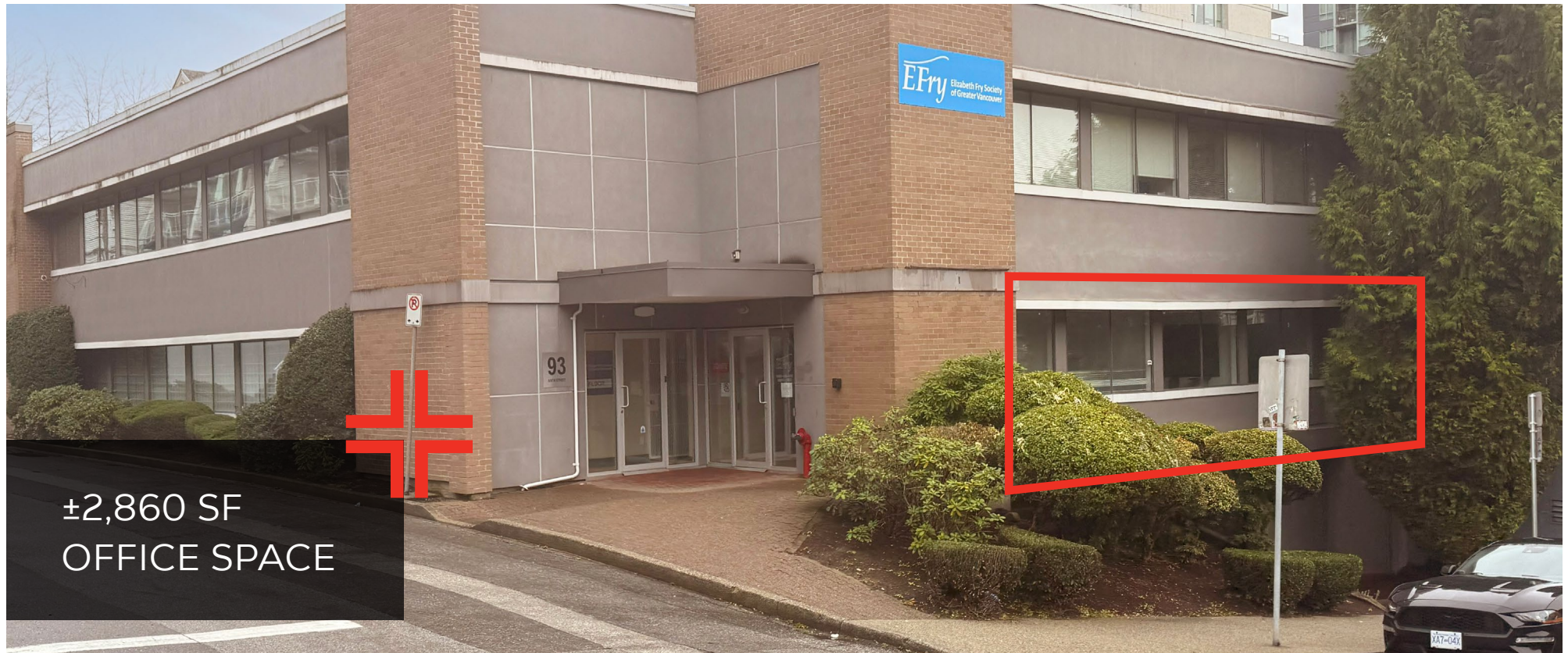


PROJECT SUMMARY

Located at 102-93 6th Street in New Westminster, this ±2,860 sq ft office space offers a prime location just a short walk from both Columbia and New Westminster SkyTrain stations, ensuring excellent transit connectivity. Columbia Street, a vibrant commercial corridor, is also within walking distance, providing easy access to a variety of retail shops, dining options, and essential services. Nearby amenities include the New Westminster Public Library and Queen's Park, offering green spaces and community events. The office features a modern layout with flexible configurations to suit a variety of business needs.

The lease includes four reserved parking stalls, with ample free street parking available for both employees and clients. With its accessibility and proximity to key amenities, this property offers a strategic, well-connected address for businesses seeking a central location.

- + Strategic Location
- + High Visibility
- + Transit Accessibility
- + 7 min walk to Columbia Skytrain Station
- + Nearby Amenities
- + Reserved Parking and Ample Street Parking



DETAILS

✦ Available Space: 2,860 SF

✦ Customizable Layout

✦ Four Built Out Offices

✦ Open Workspace

✦ Parking: Four Reserved Parking Stalls

✦ Basic Rent: \$17.00 PSF

✦ Additional Rent: \$14.50 PSF

✦ Two Washrooms

✦ Kitchen and Lunchroom

✦ Ample Free Street Parking

AREA TENANTS



RIVER MARKET
NEW WESTMINSTER BC

the old
spaghetti
factory

save **on** foods

SHOPPERS
DRUG MART

DEMOGRAPHICS

	3 MIN	5 MIN	10MIN
2024 Population	34,446	109,732	241,394
2029 Populations Projections	36,489	120,782	264,815
2024 Average HH Income	\$109,489	\$113,191	\$114,487
2024 Daytime Population	28,707	86,075	238,005

CONTACT

LIAM MARCH

Personal Real Estate Corporation
Sitings Realty Ltd

604.628.2583
liam@sitings.ca

DAVID KNIGHT

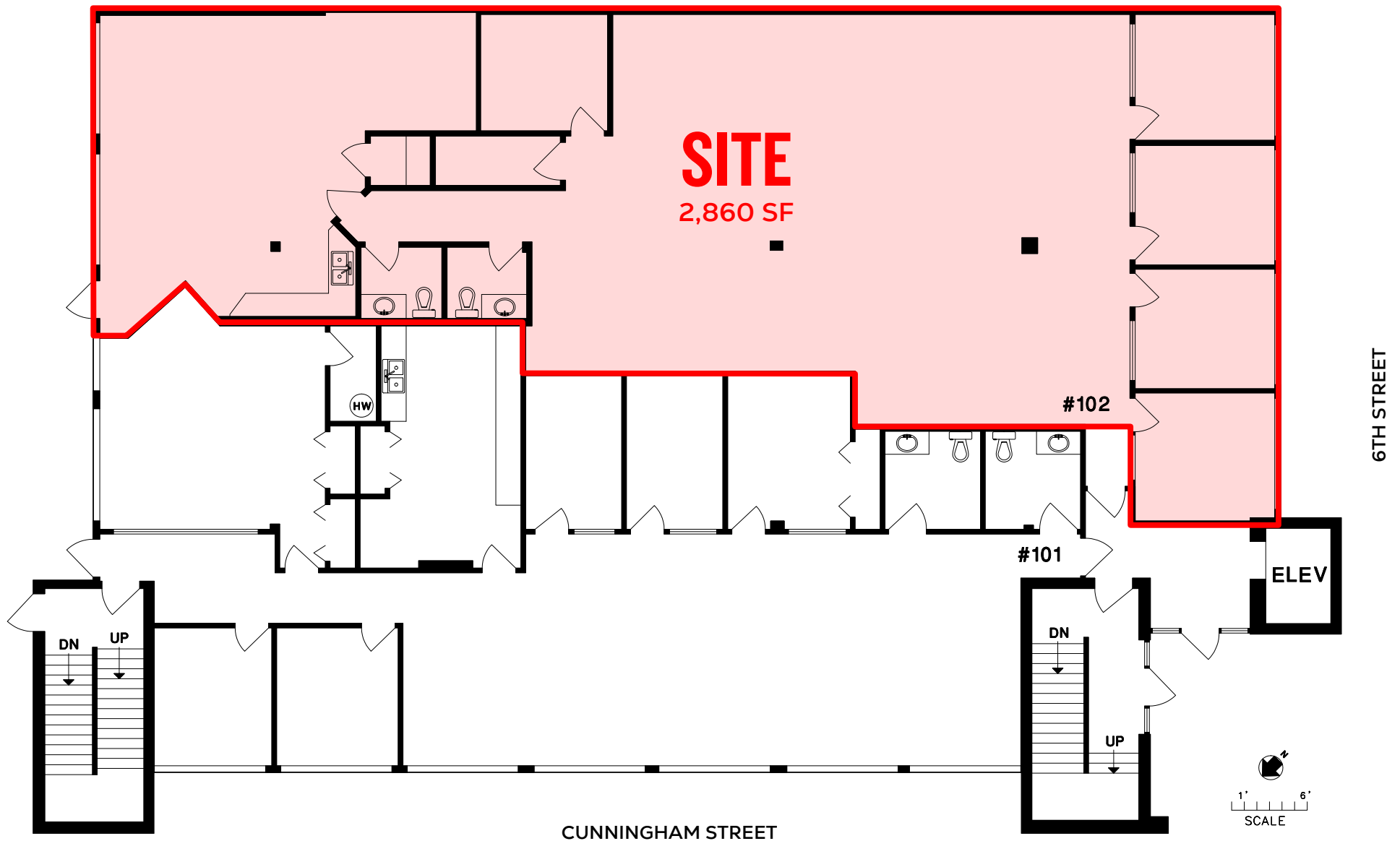
Personal Real Estate Corporation
Sitings Realty Ltd

604.416.5581
david@sitings.ca

AERIAL



SITE PLAN



PARKING PLAN

