



## RENFREW VILLAGE @ RENFREW DISTRICT

Renfrew St  
Vancouver, BC

PROPERTY LEASING BROCHURE

**DAN CLARK**  
Personal Real Estate Corporation  
604.628.2577  
dan@sitings.ca

**BRANDON SIBAL**  
Personal Real Estate Corporation  
604.628.2582  
brandon@sitings.ca

**SITINGS REALTY LTD.**  
SITINGS.CA / 604.684.6767

1595 – 650 West Georgia Street, Vancouver, BC V6B 4N8



# PROJECT SUMMARY

Renfrew Village @ Renfrew District is a six storey mixed-use building that will feature 15,000 SF of retail space below 184 market rental residential units. Retail units range in size from 628 SF to 4,554 SF.

- The project is located in a critical employment node, being close to the Broadway Technology Park and surrounding office & industrial space.
- In addition, it is only two blocks from Renfrew Skytrain Station, that sees over 6,500 riders daily.
- Renfrew Village @ Renfrew District will have 40 parking stalls over two levels of underground parking.
- Lasalle College is immediately south of the site and has an enrollment of approx 1,530 students.



This document/email has been prepared by Sitings Realty Ltd. for advertising and general information only. Although information contained herein is from sources we believe reliable, Sitings Realty Ltd. makes no guarantees, representations or warranties of any kind, expressed or implied, regarding the information including, but not limited to, warranties of content, accuracy and reliability. This document/email is subject to errors and omissions and any interested party should undertake their own inquiries as to the accuracy of the information. Sitings Realty Ltd. excludes unequivocally all inferred or implied terms, conditions and warranties arising out of this document and excludes all liability for loss and damages arising there from. All areas, measurements and dimension herein are approximate, interested parties/tenant are to verify measurements if important to them. This document/email is not an inducement representation.



SITINGS.CA  
604.684.6767 2

## DETAILS

<p>✦ <u>Units Available:</u> Unit N3 - 1,400 SF    Unit N4 - 1,628 SF Unit N6 - 1,179 SF</p>	<p>✦ <u>Parking:</u> South Building - 12 Stalls North Building - 28 Stalls</p>
<p>✦ 184 residential units above</p>	<p>✦ Renfrew and East 10<sup>th</sup> Limited Partnership</p>
<p>✦ <u>Completion:</u> South Building: Q2 2024 North Building: Q4 2024</p>	<p>✦ Contact Listings Agents for Rates</p> <p>✦ 1 minute walk to Renfrew SkyTrain Station</p>

## AREA TENANTS



## DEMOGRAPHICS

	1KM	3KM	5KM
2022 Population	15,583	169,263	400,225
2022 Daytime Population	20,732	152,434	396,738
2022 Average HH Income	\$104,632	\$106,756	\$108,625

### DAN CLARK

Personal Real Estate Corporation  
Sittings Realty Ltd

604.628.2577  
dan@sittings.ca

### BRANDON SIBAL

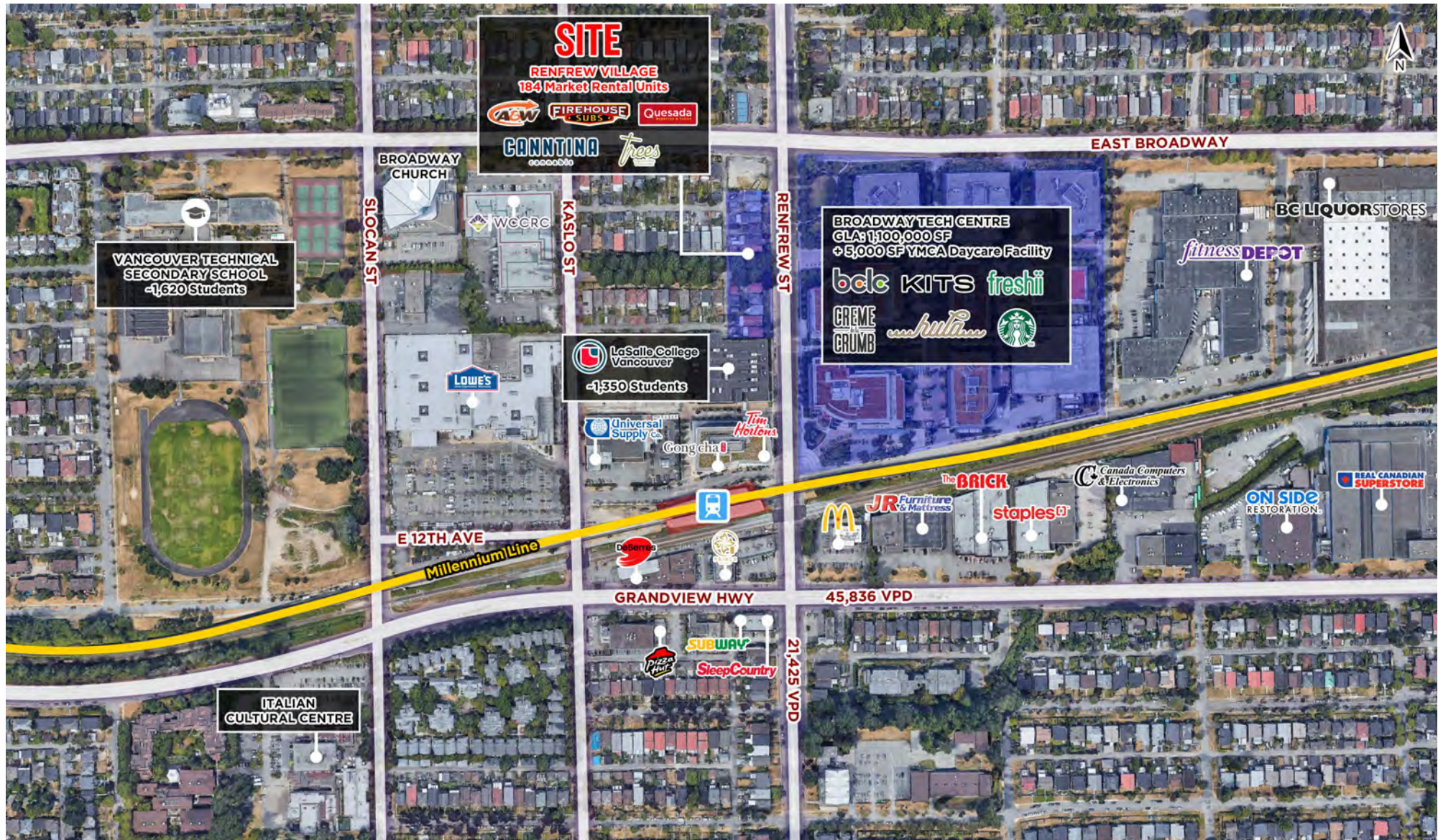
Personal Real Estate Corporation  
Sittings Realty Ltd

604.628.2582  
brandon@sittings.ca



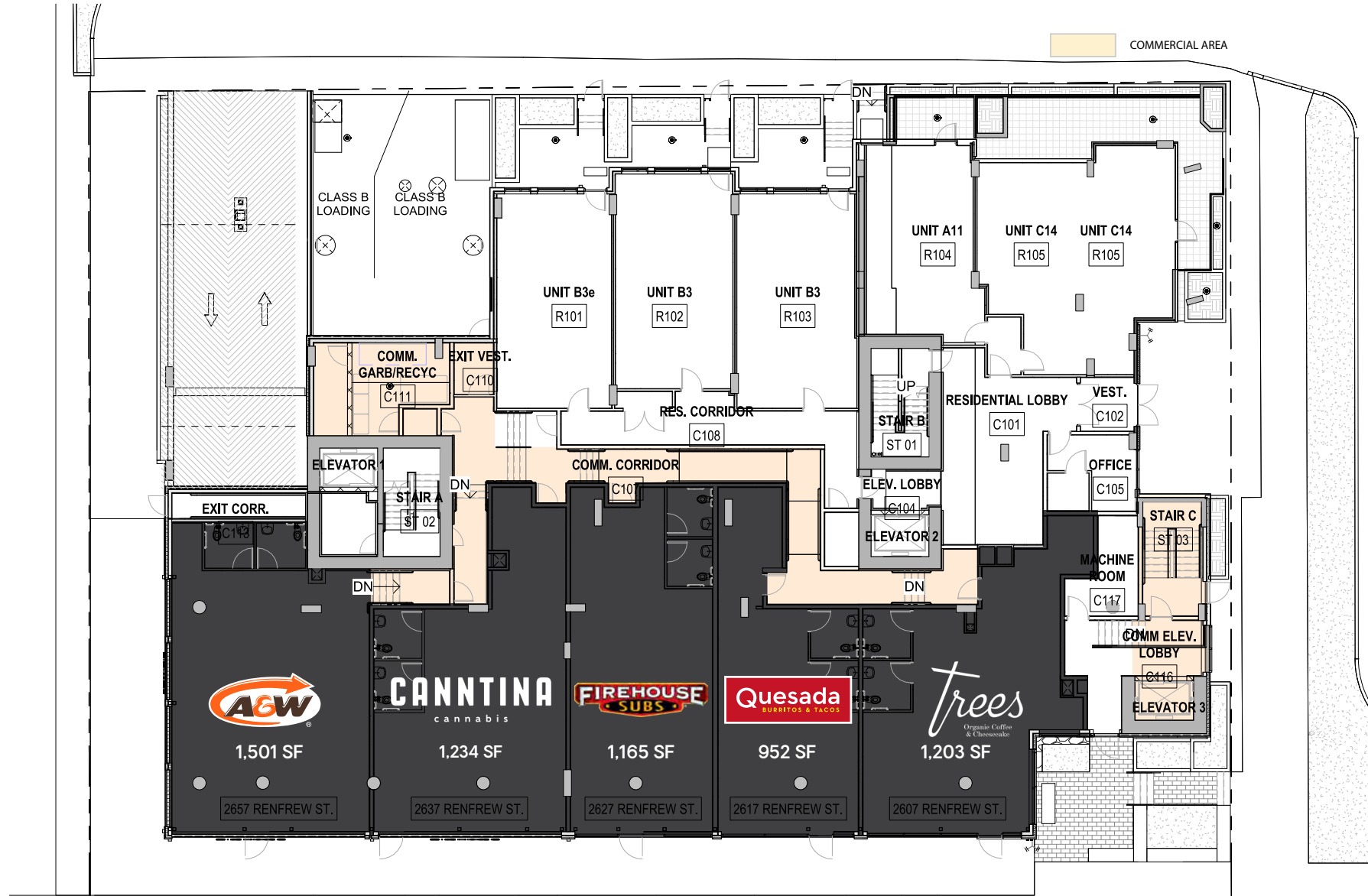








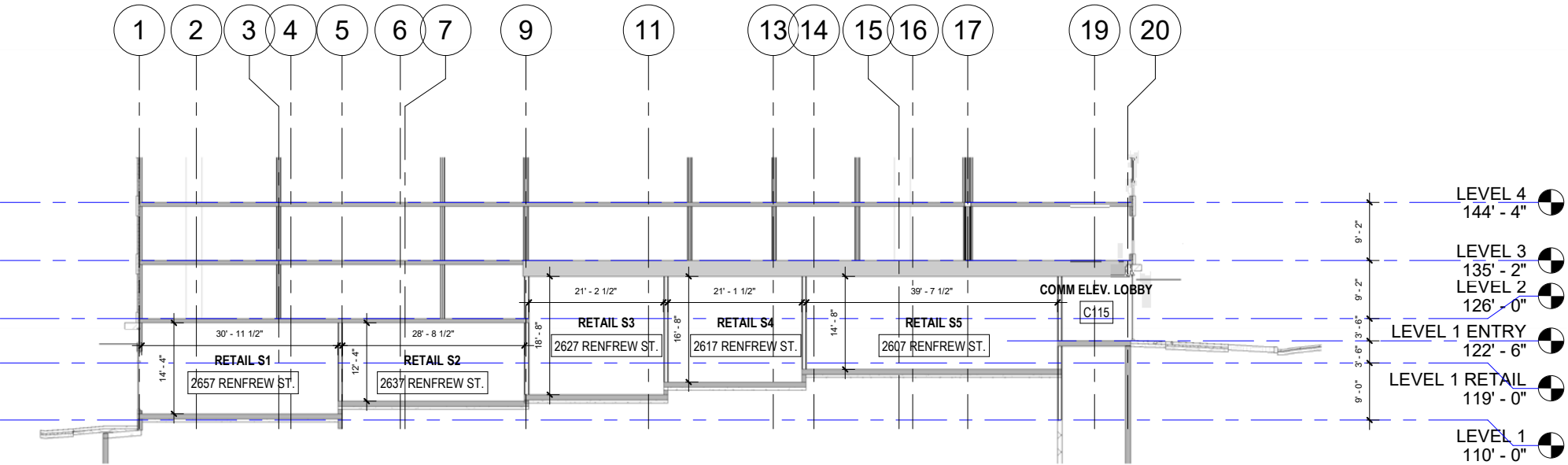
# SOUTH BUILDING | GROUND LEVEL PLAN



© trademark of A&W Trade Marks Limited Partnership, used under licence

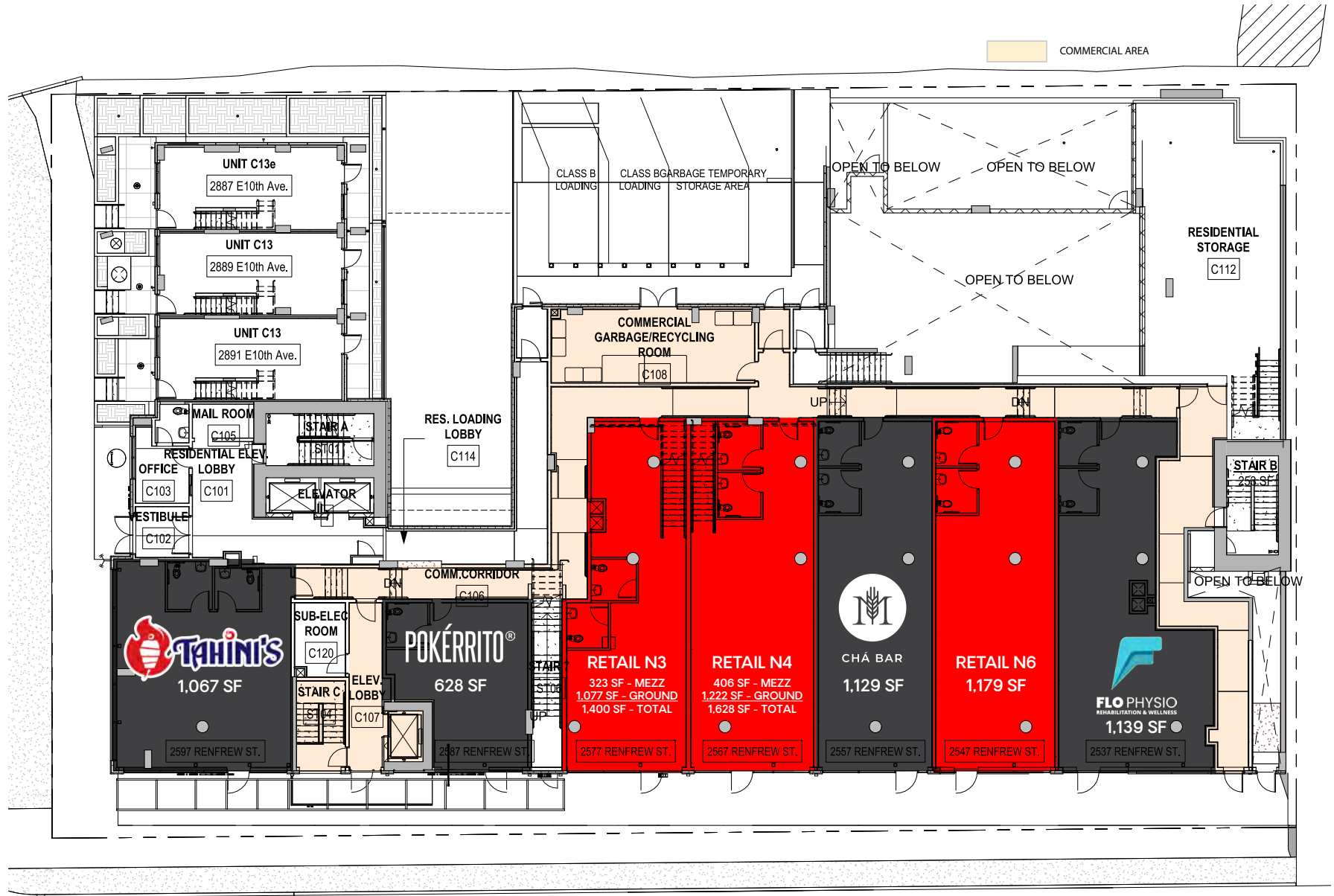


SITE SECTION | SOUTH BUILDING





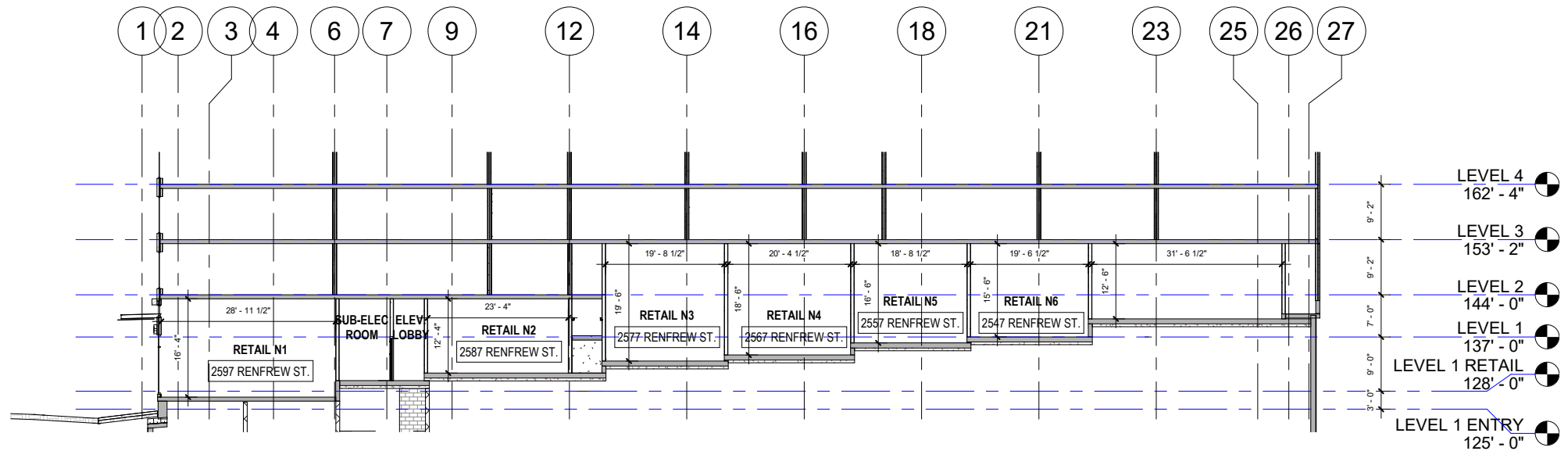
# NORTH BUILDING | GROUND LEVEL PLAN







# SITE SECTION | NORTH BUILDING



# LEGAL DESCRIPTION

## SOUTH BUILDING

Parcel Identifier: 031-326-501

Legal Description: LOT 1 BLOCK 3 SOUTH 1/2 OF SECTION  
35 TOWN OF HASTINGS SUBURBAN LANDS GROUP 1 NEW  
WESTMINSTER DISTRICT PLAN EPP108718

## NORTH BUILDING

Parcel Identifier: 031-326-528

Legal Description: LOT 2 BLOCK 2 SOUTH 1/2 OF SECTION  
35 TOWN OF HASTINGS SUBURBAN LANDS GROUP 1 NEW  
WESTMINSTER DISTRICT PLAN EPP108718





# ZONING: CD1

## INTENT

The intent of this zone is to allow for the development of a 6-storey mixed-use building including: a total of 70 secured market rental units and commercial uses at grade.



[LINK TO ZONING DEFINITIONS](#)



[LINK TO CD-1 \(782\)](#)



[LINK TO CD-1 \(783\)](#)

## PERMITTED USES

- Cultural and Recreational Uses;
- Dwelling Uses, limited to Dwelling Units in conjunction with any of the uses listed in this section;
- Institutional Uses;
- Manufacturing Uses;
- Office uses;
- Retail Uses;
- Service Uses
- Utility and Communication Uses; and
- Accessory Uses customarily ancillary to the uses permitted in this section.

All commercial uses and accessory uses listed above shall be carried on wholly within a completely enclosed building except for the following:

- (a) Farmers' Market;
- (b) Neighbourhood Public House;
- (c) Public Bike Share;
- (d) Restaurant; and

(e) Display of flowers, plants, fruits and vegetables in conjunction with a permitted use.

and

Where floor area associated with storage space is excluded, a minimum of 20% of the excluded floor area must be located within the Moderate Income Rental Housing Units.

# SOUTH BUILDING | PHOTO





# SOUTH BUILDING | PHOTO





# NORTH BUILDING | PHOTO

