



ONLY ONE HIGH EXPOSURE  
RETAIL UNIT REMAINING

# EAGLE RUN VILLAGE

41340 Government Road, Squamish, BC (Brackendale)

PROPERTY LEASING BROCHURE

DAVID KNIGHT  
Personal Real Estate Corporation  
604.416.5581  
david@sittings.ca

LIAM MARCH  
Personal Real Estate Corporation  
604.628.2583  
liam@sittings.ca



SITINGS REALTY LTD.  
SITINGS.CA / 604.684.6767  
1595 – 650 West Georgia Street, Vancouver, BC V6B 4N8

# PROJECT SUMMARY

Discover Eagle Run Village, a retail plaza nestled in the Squamish neighborhood of Brackendale. Situated in the northernmost community of Squamish, this area is renowned for hosting the largest concentration of wintering bald eagles in North America, earning it the title of the “World Eagle Capital”, and welcoming visitors from across the globe.

Brackendale enjoys excellent accessibility, reachable by turning left on Depot Road to the north or Garibaldi Way to the south from Highway 99. Furthermore, Government Road, one of Squamish’s main thoroughfares that runs parallel to the highway, offers another convenient route.

- Optimal in-line site
- Limited supply of retail opportunities in Brackendale.
- High profile pylon signage opportunity
- Ample surface parking
- High household income in the surrounding area
- Parks and trails nearby



## DETAILS

✚ Available Space: 2,730 SF + covered patio

✚ Available: Immediately

✚ Base Rent: Contact Listing Agent

✚ Additional Rent: \$12.50 PSF

✚ Prominent in-line CRU available

✚ Prominent store front

✚ Ample surface parking

✚ Pylon signage opportunity

## AREA TENANTS



## DEMOGRAPHICS

	3 MIN	5 MIN	10 MIN
2023 Population	2,245	4,409	13,244
2028 Populations Projections	2,907	5,140	16,649
2023 Daytime Population	1,057	2,197	9,088
2023 Average HH Income	\$157,151	\$151,210	\$154,290

## CONTACT

DAVID KNIGHT

Personal Real Estate Corporation  
Sitings Realty Ltd

604.416.5581  
david@sitings.ca

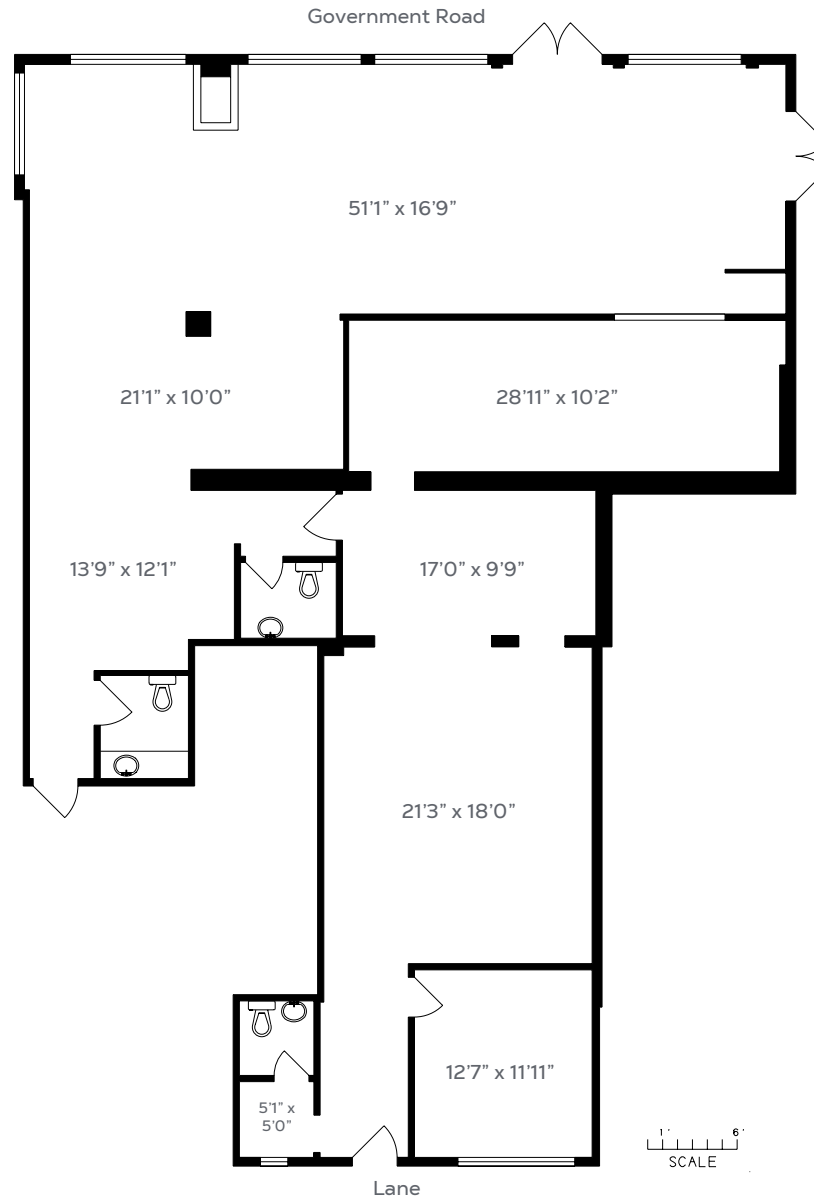
LIAM MARCH

Personal Real Estate Corporation  
Sitings Realty Ltd

604.628.2583  
liam@sitings.ca



# FLOOR PLAN - CRU 5





CRU 5 - Exterior



Pylon



CRU 5 - Exterior



Ample Parking Available