



625 MAIN ST

VANCOUVER, BC

RETAIL LEASING BROCHURE



BRANDON SIBAL
Personal Real Estate Corporation
604.628.2582
brandon@sitings.ca

SAM SHAPRAY
Junior Associate
604.446.1225
sam@sitings.ca

SITINGS REALTY LTD.
SITINGS.CA / 604.684.6767
1595 – 650 West Georgia Street, Vancouver, BC V6B 4N8

PROJECT SUMMARY

625 Main Street is a mixed-use development strategically positioned within Vancouver's Chinatown. The project integrates residential density with activated ground floor retail in a neighbourhood undergoing meaningful transition. The immediate trade area is supported by a mix of established local businesses, everyday services, and strong transit connectivity.

Additionally, the project stands to benefit from the \$2.17 billion relocation of St. Paul's Hospital and the development of a new integrated health and life sciences campus located in the nearby False Creek Flats, which is projected to bring approximately 14,000 new jobs to the immediate area.

✚ Prominently located with frontage to Main Street, one of Vancouver's primary north-south arterial roads with exposure to over 14,000 vehicles per day

✚ 650m from the Main Street Skytrain which averages over 11,500 daily boardings (2024)

✚ 450m from new St. Paul's Hospital which is set to deliver in 2027



This document/email has been prepared by Sitings Realty Ltd. for advertising and general information only. Although information contained herein is from sources we believe reliable, Sitings Realty Ltd. makes no guarantees, representations or warranties of any kind, expressed or implied, regarding the information including, but not limited to, warranties of content, accuracy and reliability. This document/email is subject to errors and omissions and any interested party should undertake their own inquiries as to the accuracy of the information. Sitings Realty Ltd. excludes unequivocally all inferred or implied terms, conditions and warranties arising out of this document and excludes all liability for loss and damages arising there from. All areas, measurements and dimension herein are approximate, interested parties/tenant are to verify measurements if important to them. This document/email is not an inducement representation.

DETAILS

✦ Size: 1,168 SF

✦ Available: Immediately

✦ Base Rent: Contact Listing Agents

✦ Additional Rent: \$25.90 PSF (2026 est.)

✦ Fixtured restaurant space

✦ 400amp electrical service

 VIRTUAL TOUR

AREA TENANTS



BARBARA

ST LAWRENCE ✦

the keefer bar



DEMOGRAPHICS

	500 M	1 KM	3 KM	TRADE AREA
2025 Population	13,573	36,554	251,283	383,339
2030 Populations Projections	14,030	37,699	259,074	394,331
2025 Daytime Population	16,495	58,722	411,990	524,348
2025 Average HH Income	\$83,005	\$105,036	\$129,407	\$133,760

CONTACT

BRANDON SIBAL

Personal Real Estate Corporation
Sitings Realty Ltd

604.628.2582
brandon@sitings.ca

SAM SHAPRAY

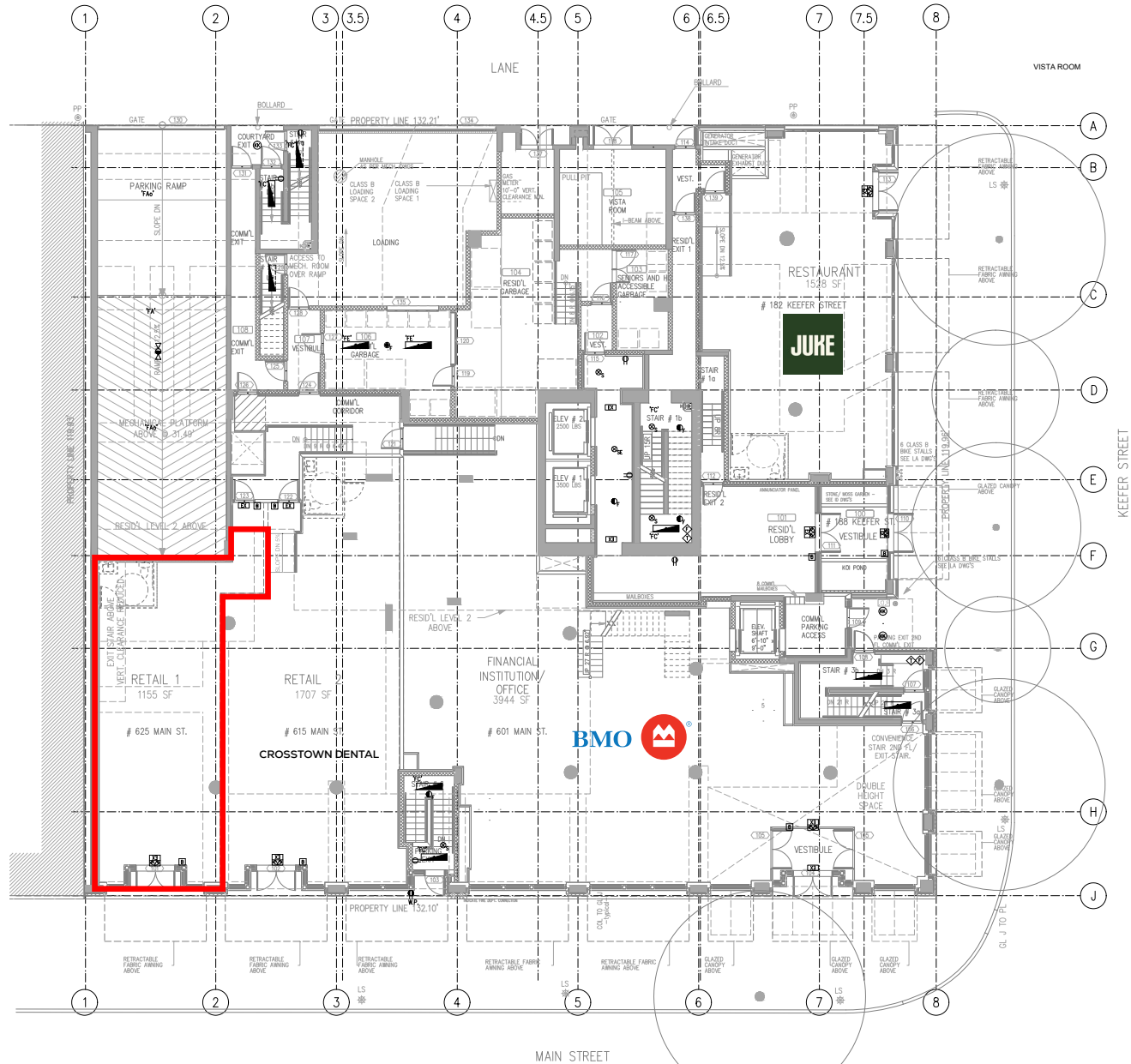
Junior Associate
Sitings Realty Ltd

604.446.1225
sam@sitings.ca

AERIAL

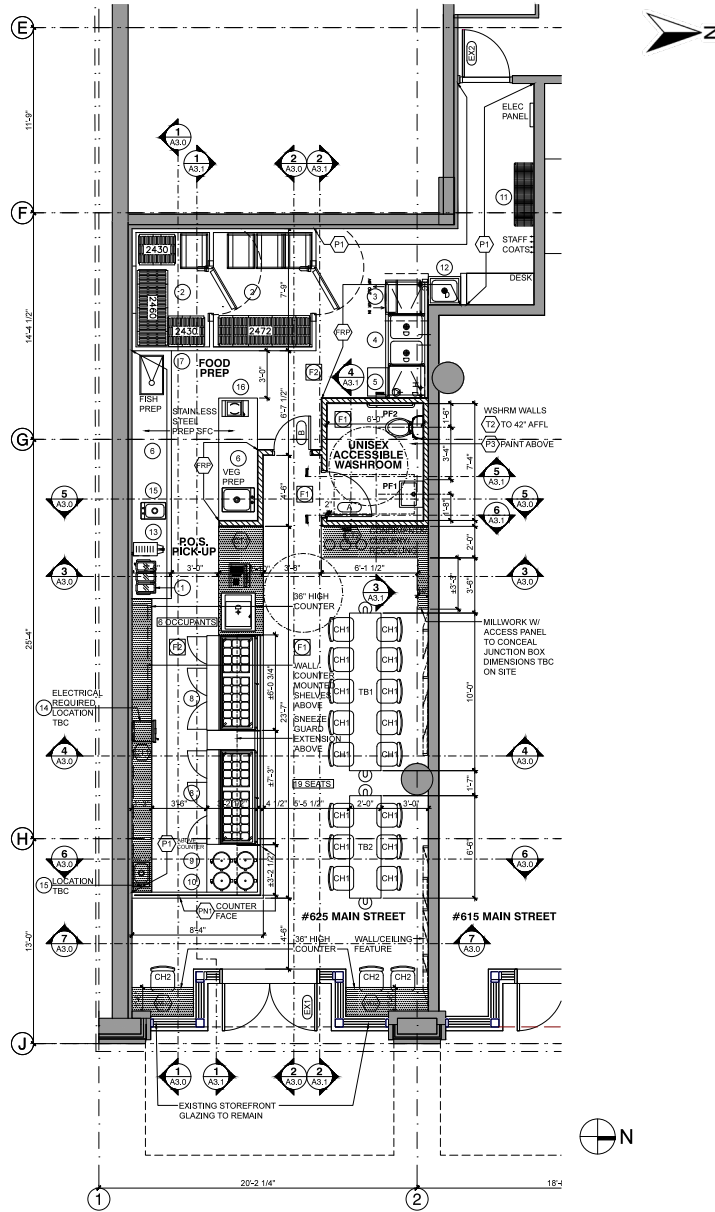


SITE PLAN



This document/email has been prepared by Sitings Realty Ltd. for advertising and general information only. Although information contained herein is from sources we believe reliable, Sitings Realty Ltd. makes no guarantees, representations or warranties of any kind, expressed or implied, regarding the information including, but not limited to, warranties of content, accuracy and reliability. This document/email is subject to errors and omissions and any interested party should undertake their own inquiries as to the accuracy of the information. Sitings Realty Ltd. excludes unequivocally all inferred or implied terms, conditions and warranties arising out of this document and excludes all liability for loss and damages arising there from. All areas, measurements and dimension herein are approximate, interested parties/tenant are to verify measurements if important to them. This document/email is not an inducement representation.

FLOOR PLAN





*Please note: previous tenant's equipment and chattels have been removed

