



FOR LEASE

TRAIL BAY CENTRE

5755 Cowrie Street
Sechelt, BC



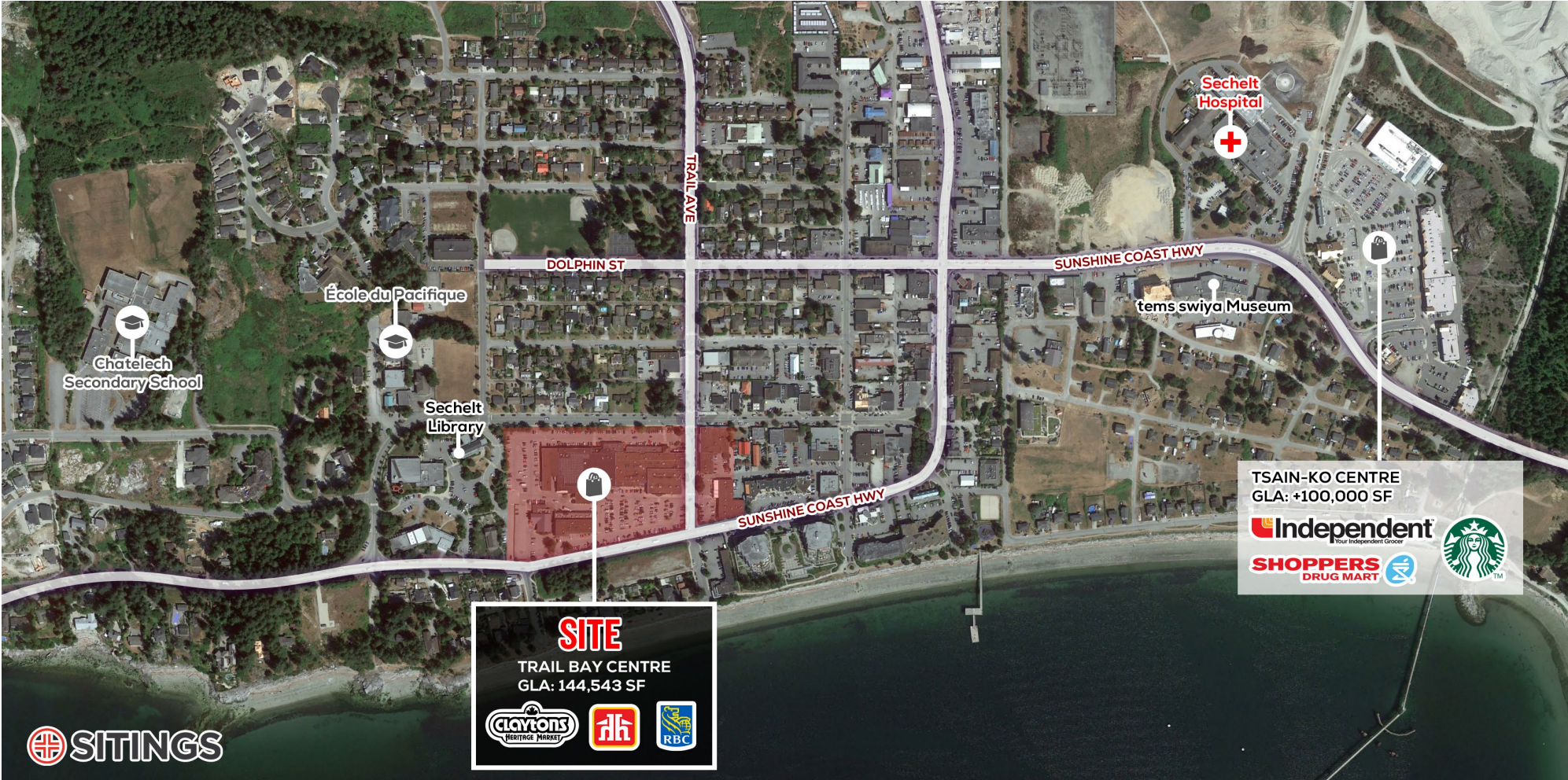
SHELDON SCOTT
Personal Real Estate Corporation
604.788.1225
sheldon@sitings.ca

KAYLA MORROW
Senior Associate
604.416.5584
kayla@sitings.ca

SITINGS REALTY LTD.
SITINGS.CA / 604.684.6767
1595 – 650 West Georgia Street
Vancouver, BC V6B 4N8

LOCATION

Trail Bay Centre is situated in a prime location in the heart of Sechelt, along the Sunshine Coast Highway. Sechelt is located at the core of Shishalh Nation Lands, serving as the central hub of the Sunshine Coast, attracting both locals and visitors from the surrounding areas for all their necessities. The District of Sechelt is located on the Sunshine Coast, approximately 50 km northwest of Vancouver. Accessible through a scenic 40-minute ferry ride from Horseshoe Bay or a convenient 20-minute flight from Downtown Vancouver, the region is well-known for its beautiful parks, oceans & lakes, and beaches offering a variety of outdoor recreation activities.



This document/email has been prepared by Sitings Realty Ltd. for advertising and general information only. Although information contained herein is from sources we believe reliable, Sitings Realty Ltd. makes no guarantees, representations or warranties of any kind, expressed or implied, regarding the information including, but not limited to, warranties of content, accuracy and reliability. This document/email is subject to errors and omissions and any interested party should undertake their own inquiries as to the accuracy of the information. Sitings Realty Ltd. excludes unequivocally all inferred or implied terms, conditions and warranties arising out of this document and excludes all liability for loss and damages arising there from. All areas, measurements and dimension herein are approximate, interested parties/tenant are to verify measurements if important to them. This document/email is not an inducement representation.

THE PROJECT

The project is strategically located on the southeast corner of Trail Avenue and Cowrie Street, the heart of Sechelt's Town Centre. Trail Bay Centre encompasses over 60 stores, shops, and restaurants and it is anchored by Clayton's Heritage Market, a Liquor Store, Rx Drug Mart, Royal Bank, Home Hardware, Westland Insurance, and many others.

- Prime location in the Heart of Sechelt
- Easy access and exposure to the Sunshine Coast Highway (Teredo Street)
- Anchored by Clayton's Heritage Market
- Over 144,000 square feet of retail space



RETAIL UNITS
FOR LEASE

This document/email has been prepared by Sitings Realty Ltd. for advertising and general information only. Although information contained herein is from sources we believe reliable, Sitings Realty Ltd. makes no guarantees, representations or warranties of any kind, expressed or implied, regarding the information including, but not limited to, warranties of content, accuracy and reliability. This document/email is subject to errors and omissions and any interested party should undertake their own inquiries as to the accuracy of the information. Sitings Realty Ltd. excludes unequivocally all inferred or implied terms, conditions and warranties arising out of this document and excludes all liability for loss and damages arising there from. All areas, measurements and dimension herein are approximate, interested parties/tenant are to verify measurements if important to them. This document/email is not an inducement representation.

DETAILS

✦ Available Retail Units:

Unit 16: 1,140 SF

Unit 51: 1,210 SF

Available Office Units:

Unit 101: 1,134 SF (First Floor)

Unit 209: 360 SF (Second Floor)

✦ Base Rent: Please Contact Listing Agents

✦ Additional Rent:

Interior Units: \$9.60 PSF (2026)

Exterior Units: \$8.10 PSF (2026)

Note: A Promotion Fund is also applicable at the Shopping Centre.

✦ Excellent Exposure to the Sunshine Coast Hwy (Teredo St), Cowrie St, and Trail Ave

✦ Parking:

Mall & Royal Bank Building: 429 Stalls

Bayside Building: 35 Stalls

ES Clayton Building: 16 Stalls

Leeuwin Properties Building: 61 Stalls

Total Surface Stalls: 541 Stalls

✦ Prominent Signage Available

MALL TENANTS



COMING SOON



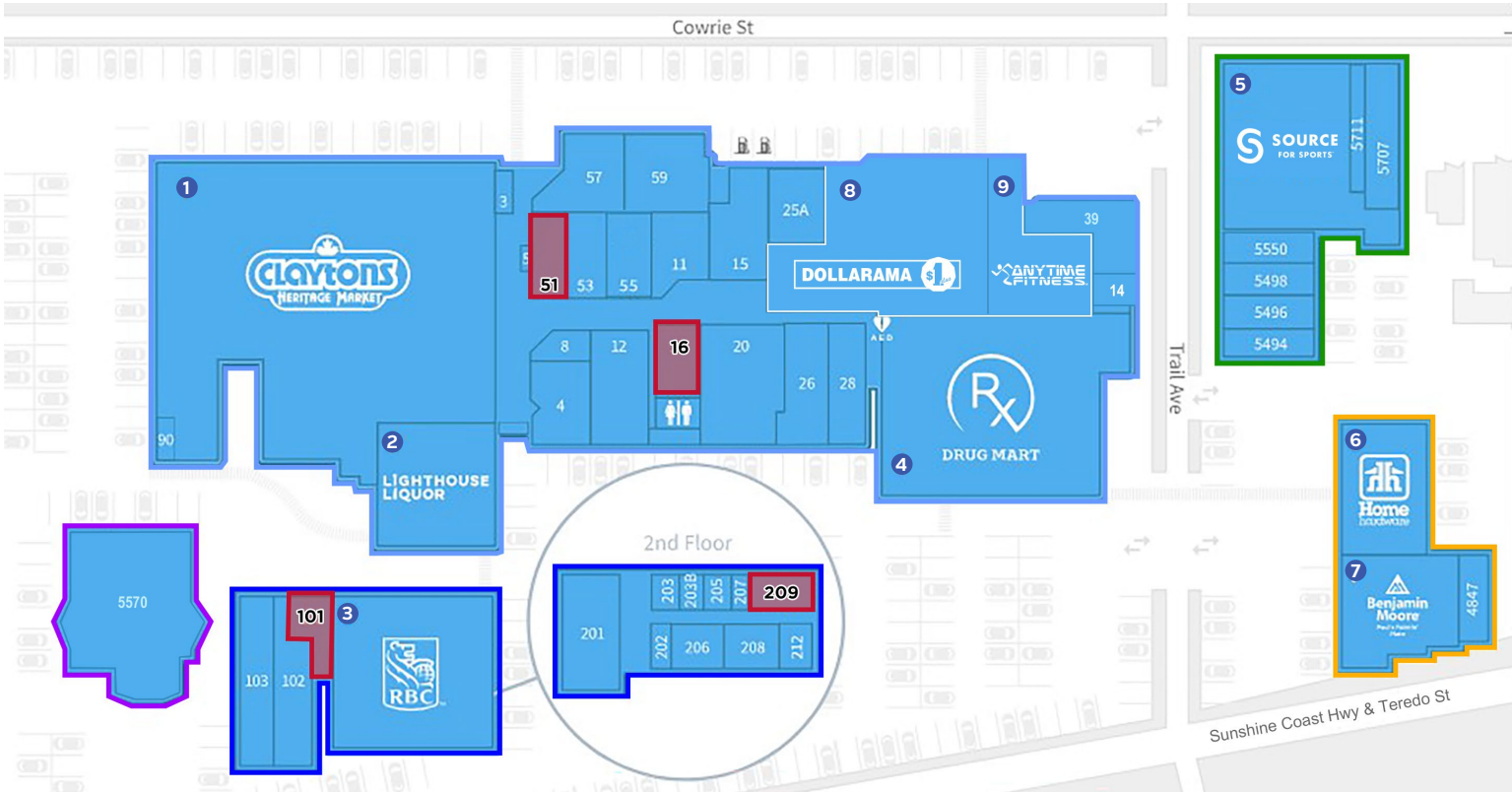
DEMOGRAPHICS

DISTANCE	1 KM	5 KM	10 KM
2025 Population	1,190	9,347	12,073
2030 Population Projection	1,201	9,515	12,319
2025 Daytime Population	2,590	10,030	11,820
2025 Average Household Income	\$93,537	\$119,149	\$119,686

SITE PLAN

TENANT LEGEND

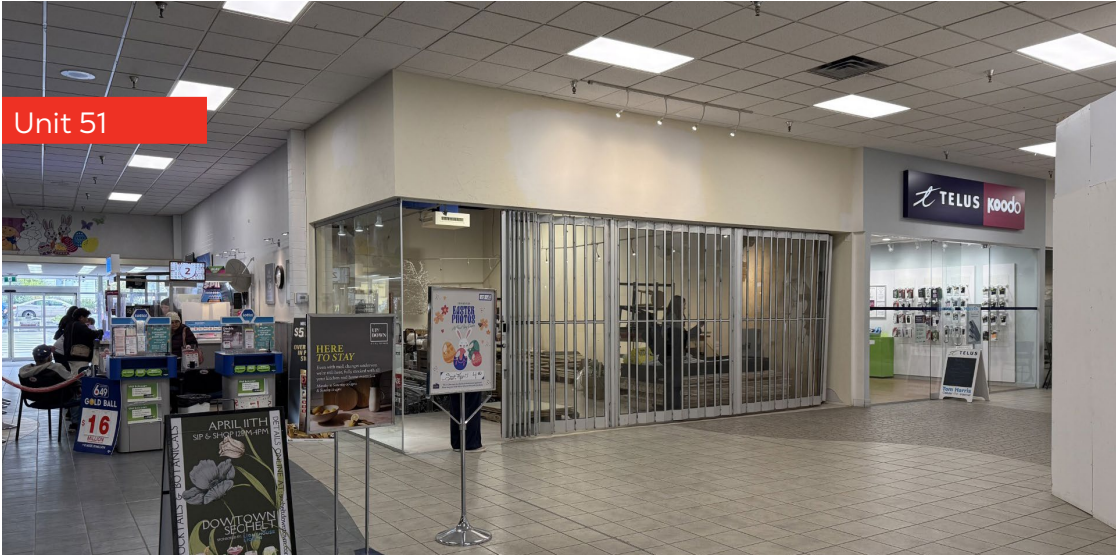
TRAIL BAY CENTRE	
1	Claytons Heritage Market
2	Lighthouse Liquor
3	RBC
4	RX Drug Mart
5	Source for Sports
8	Dollarama (Coming Soon)
9	Anytime Fitness (Coming Soon)
3	Trail Bay Café
4	Georgian Trading Company
5	Trail Bay Lotto Centre
8	Flying Saucers Tea & Coffee Emporium
11	Upstairs Downstairs
12	Cactus Flower Fashion
14	Tenant Coming Soon
15	Westland Insurance
16	Space Available
20	Pet Valu
25A	James & McIntye CPA
26	Subway
28	Coast Flow Yoga
39	Juno Restaurant
51	Space Available
53	Tom Harris Cellular
55	Game Point
57	Sima Sushi
59	Saffron
90	Sechelt Return-It Depot



Legend	ROYAL BANK BLDG 1ST FLOOR	ROYAL BANK BLDG 2ND FLOOR	ES CLAYTON BLDG	BAYSIDE BLDG	LEEUWIN PROPERTIES BLDG
 ROYAL BANK BLDG	101 Space Available	201 Holywell Properties	5494 Talewind Books	6 Home Hardware	
 ES CLAYTON BLDG	102 Pizza Hut	202 Feather Touch Electrolysis	5496 Pastimes Toy Store	7 Benjamin Moore	
 LEEUWIN PROPERTIES BLDG	103 Shift Kitchen Tapas Bar	203 VG Group & Companies	5498 Fresh from the Coast	4847 Emerge Design	
 BAYSIDE BLDG		203B Agnes Huang Law Corp	5550 Ty's Bistro		
 UNDER OFFER		205 Pacific Counselling	5711 Fossellos		
 AVAILABLE		206 District of Sechelt & Community Archives	5707 Moorestock		
		207 Nexus Facilitating & Coaching			
		208 Design IT Software			
		209 Space Available			
		212 RBC Dominion Securities			

This document/email has been prepared by Sitings Realty Ltd. for advertising and general information only. Although information contained herein is from sources we believe reliable, Sitings Realty Ltd. makes no guarantees, representations or warranties of any kind, expressed or implied, regarding the information including, but not limited to, warranties of content, accuracy and reliability. This document/email is subject to errors and omissions and any interested party should undertake their own inquiries as to the accuracy of the information. Sitings Realty Ltd. excludes unequivocally all inferred or implied terms, conditions and warranties arising out of this document and excludes all liability for loss and damages arising there from. All areas, measurements and dimension herein are approximate, interested parties/tenant are to verify measurements if important to them. This document/email is not an inducement representation.

PHOTOS - AVAILABLE UNITS



PHOTOS - TRAIL BAY CENTRE





CONTACT

SHELDON SCOTT

Personal Real Estate Corporation
Sitings Realty Ltd

604.788.1225

sheldon@sitings.ca

KAYLA MORROW

Senior Associate

604.416.5584

kayla@sitings.ca